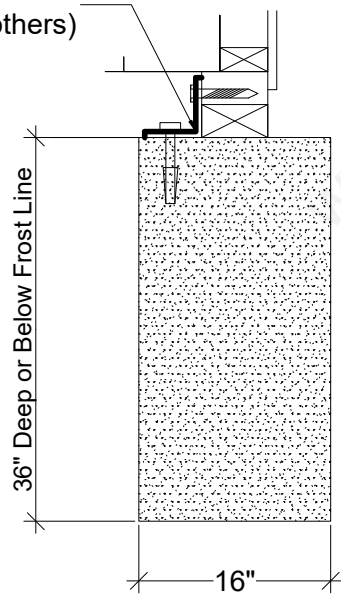


5x5 Steel Angle (to secure barn to pillars / by others)



1 GABLE DETAIL
A.1 SCALE: 1/4" = 1'-0"

2 FOUNDATION DETAIL
A.1

NOT FOR CONSTRUCTION USE

THE WWW.BARNTOOLBOX.COM WILL NOT BE UNDER ANY CIRCUMSTANCES LIABLE TO THE CONSUMER FOR ANY INCIDENTAL, CONSEQUENTIAL, SPECIAL, EXEMPLARY OR PUNITIVE DAMAGES ARISING OUT OF THE USE OF THESE DRAWINGS.

CONSULT WITH YOUR ENGINEER BEFORE USING THESE DRAWINGS

Copyright 2016 www.BarnToolBox.com All Rights Reserved

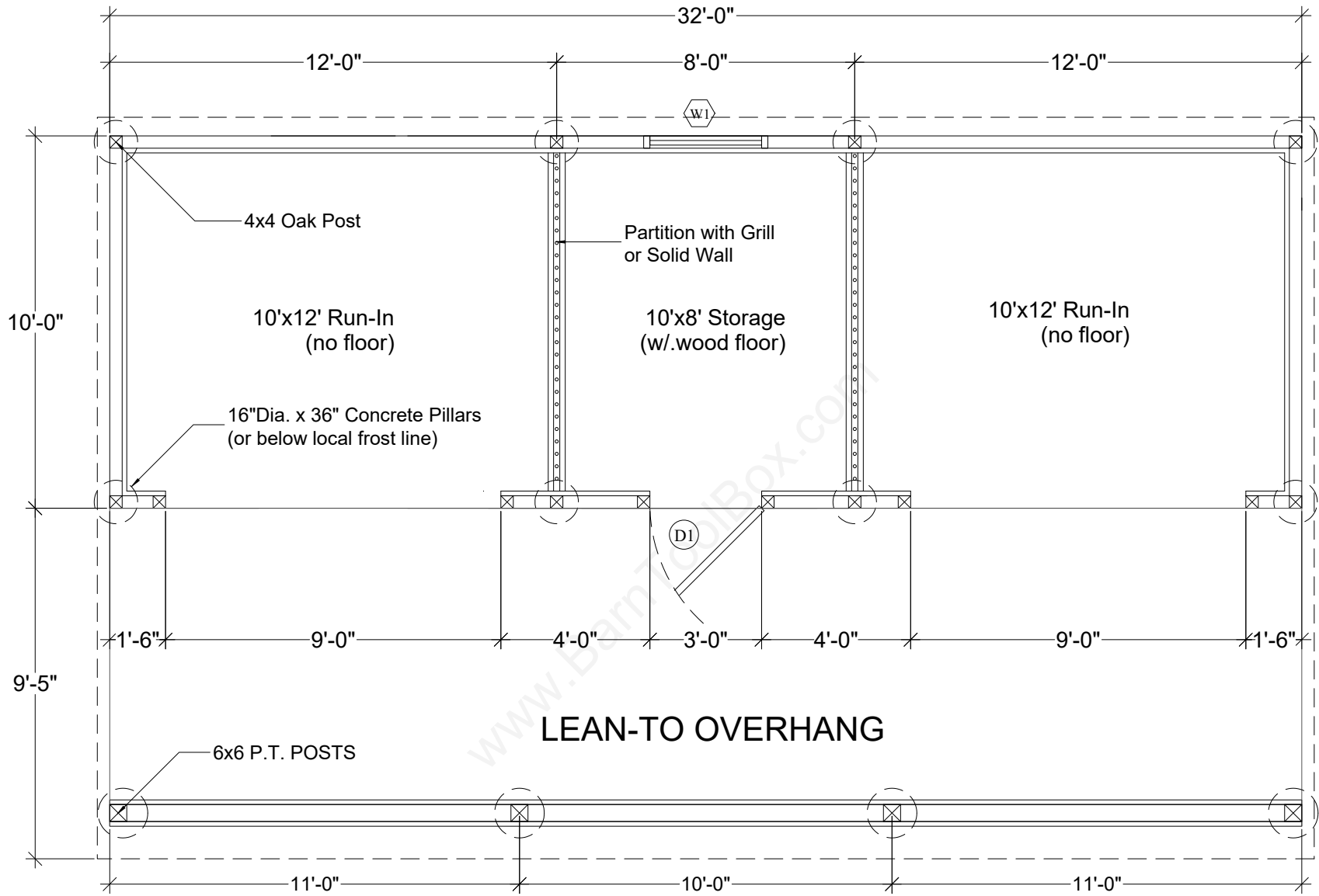
The BarnToolBox

10'x32' BARN with OVERHANG

TITLE
GABLE & FOUNDATION DETAILS

SIZE CAGE CODE DWG NO IREV

SCALE SHEET **A.1**



DESIGN LOADS:

WIND LOAD:
110 MPH (3 SEC. GUSTS)
90 MPH SUSTAINED

SNOW LOAD:
LIVE LOAD - 40 PSF PLUS DRIFT
DEAD LOAD - ROOF WITH METAL 5 PSF

1. EXTERIOR WALLS TO BE LINED ON INSIDE w/. 1 x 8 OAK VERTICAL KICKBOARDS UP TO 4'-0"
2. STORAGE ROOM TO HAVE WOODEN FLOOR

(D1) 3'x7' WD SERVICE DOOR

(W1) 6-LITE WINDOW

NOT FOR CONSTRUCTION USE

THE WWW.BARNTOOLBOX.COM WILL NOT BE UNDER ANY CIRCUMSTANCES LIABLE TO THE CONSUMER FOR ANY INCIDENTAL, CONSEQUENTIAL, SPECIAL, EXEMPLARY OR PUNITIVE DAMAGES ARISING OUT OF THE USE OF THESE DRAWINGS.

CONSULT WITH YOUR ENGINEER BEFORE USING THESE DRAWINGS

Copyright 2016 www.BarnToolBox.com All Rights Reserved

SEAL

The BarnToolBox

10'x32' BARN with OVERHANG

TITLE

FLOOR PLAN

SIZE

CAGE CODE

DWG NO

REV

SCALE: 1/4" = 1'-0"

SHEET

A.2