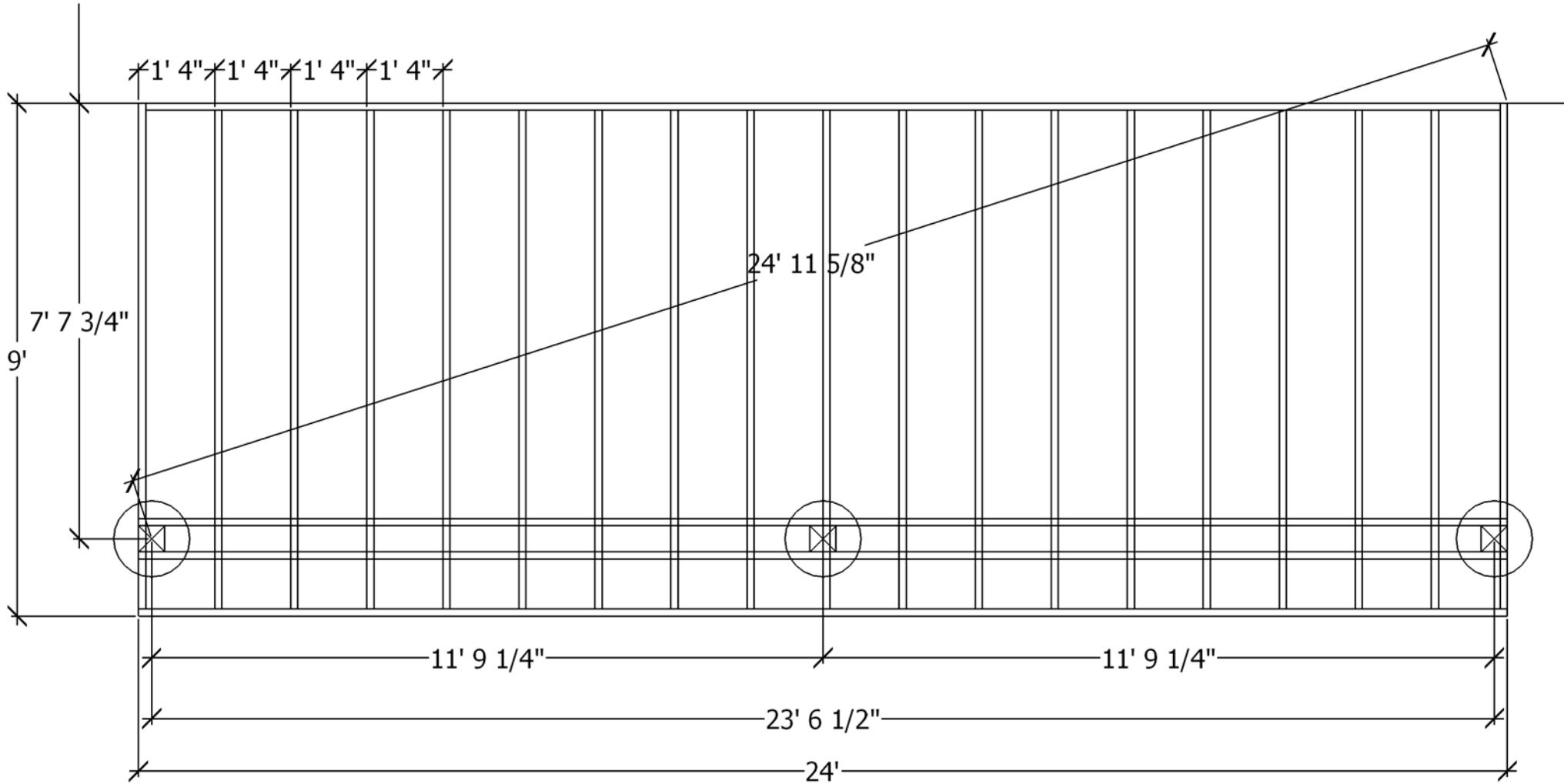


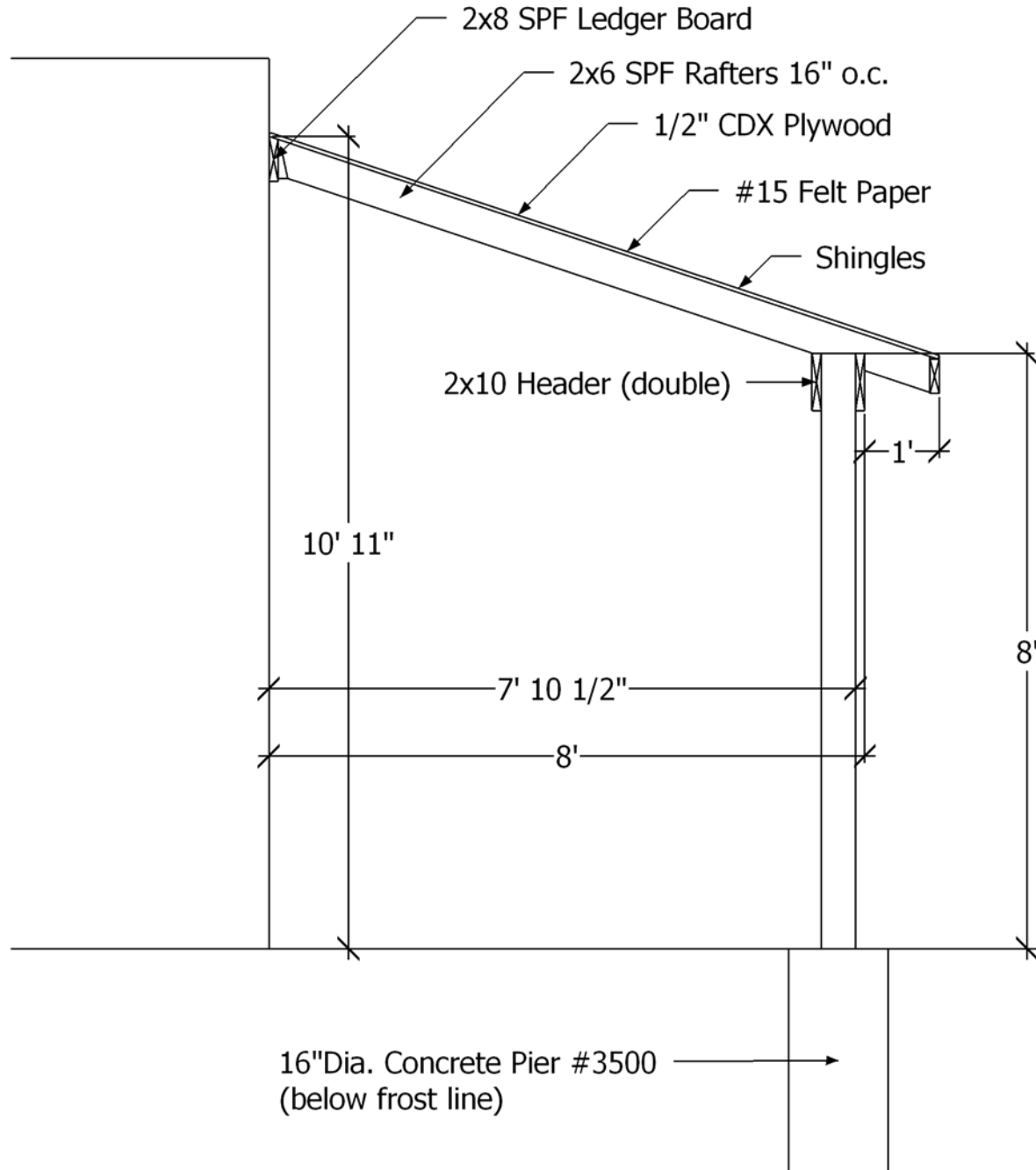
# 8'x24'x8' Lean-to Print Details



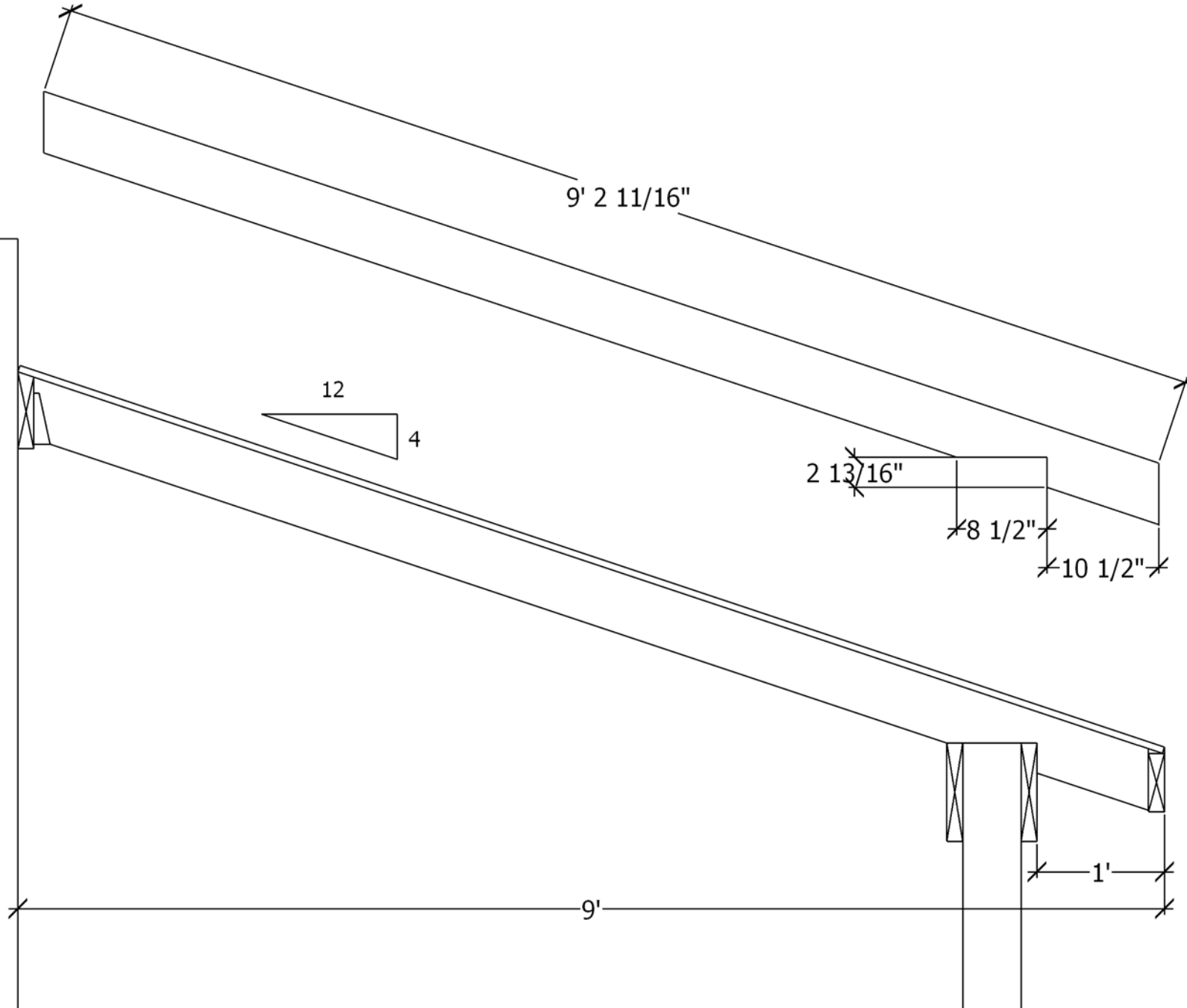
# 8'x24'x8' Lean-to Print Details



# 8'x24'x8' Lean-to Print Details



# 8'x24'x8' Lean-to Print Details



# 8'x24'x8' Lean-to Print Details

## Materials Needed to Build 8'x24' wide Lean-to Roof

- (3) 6x6x8' Pressure Treated Posts (or longer, if placing posts in ground or higher roof is needed)
  - (2) 2x6x8' Pressure Treated for Y-Braces
  - (4) 2x10x12' #2 SPF Headers (may also be pressure treated)
  - (2) 2x8x12' #2 SPF Ledger Board (or pressure treated if attaching to concrete wall)
  - (19) 2x6x10' #2 SPF Rafters (if spacing 16" o.c.). Note: If spacing 24" o.c., use #1 2x6x10' Yellow Pine rafters. If not using fascia, 2 end rafters should be pressure treated.
  - (2) 2x6x12' #2 SPF Face Board (or pressure treated if not covering with fascia)
  - (17) Joist Hangers (for 2x6 rafters)
  - (5) 1.5"x5.5"x10' Metal Fascia
  - (3) 10' Flashing (installed at ledger board/wall to prevent leaks)
  - (8) 1/2" CDX Plywood (for roof sheathing)
  - (1) Roll of #15 Felt Paper
  - (5) Aluminum Drip Edge
  - (2.5) Squares of Shingles
- Nails, Bolts, Other Hardware